

**We are now Refinitiv, formerly the Financial and Risk business of Thomson Reuters. We've set a bold course for the future – both ours and yours – and are introducing our new brand to the world.**

**As our brand migration will be gradual, you will see traces of our past through documentation, videos, and digital platforms.**

**Thank you for joining us on our brand journey.**



**REFINITIV<sup>TM</sup>** 

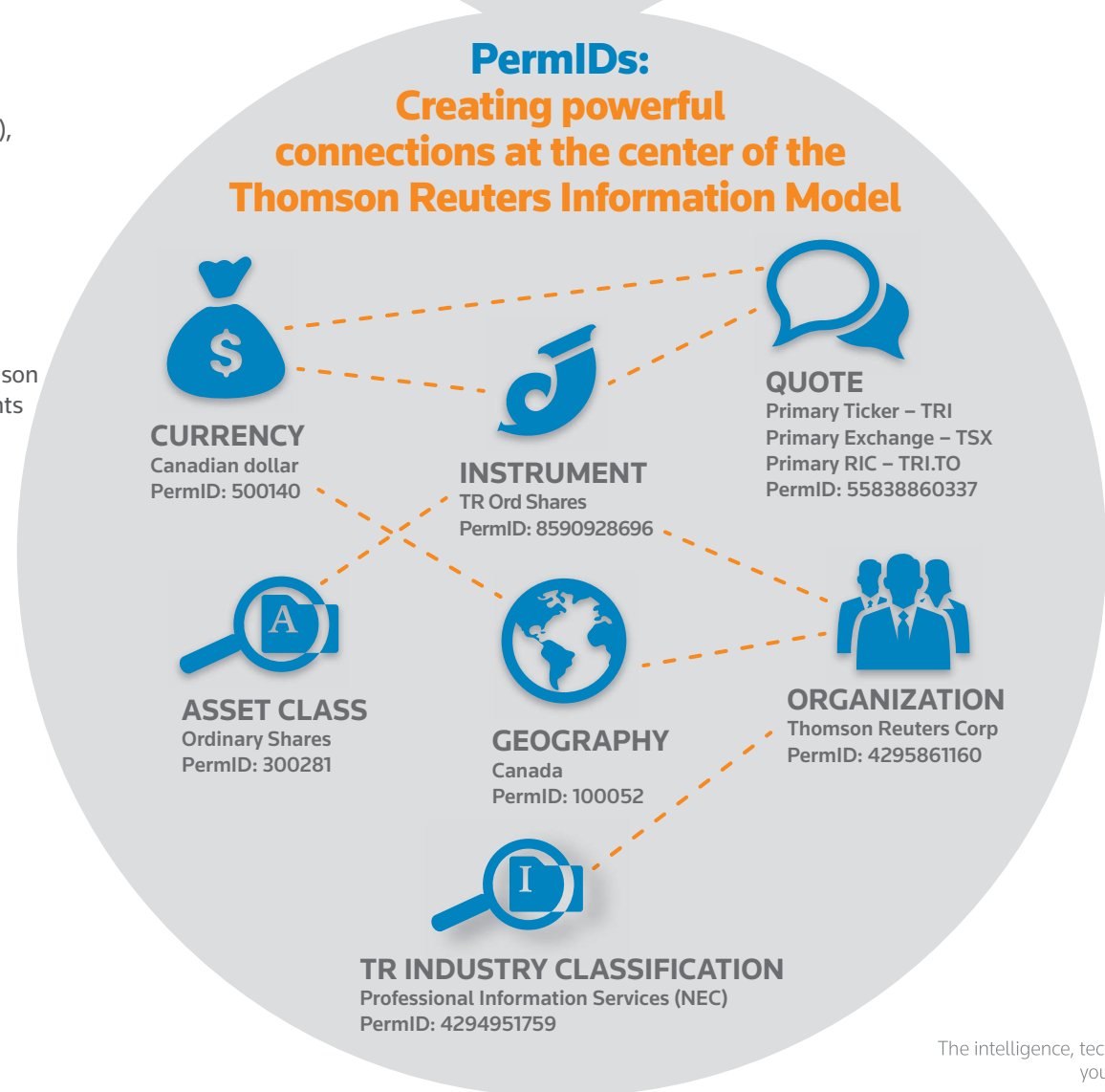


# Thomson Reuters PermID

## A Barcode for Information

### PermIDs are:

- Complementary** – to the Reuters Instrument Code (RIC), International Security Identification Numbers (ISINs), Legal Entity Identifiers (LEIs), and other identifiers
- Comprehensive** – provides identification across a wide variety of organizations, instruments, funds, issuers and people
- Connected** – PermIDs connect all data sets in the Thomson Reuters information model, helping gain valuable insights
- Machine-readable** – a 64-bit number that operates beneath the surface to connect related information instantly and seamlessly
- Open** – Thomson Reuters open strategy is driving new opportunities, collaboration and innovation; we are Open Data Institute (ODI)-certified
- Permanent** – a never reused identifier is assigned to each information object; they don't change and allow you to trace object changes over time
- Precise** – points to each specific information object
- Scalable** – a vast number of PermIDs are available
- Unique** – each instance has its own PermID



### Power your systems:

- Develop platforms with PermID.org** for easily searchable and better-connected data that returns the right connections to you
- Generate Alpha** by tagging all your data and exposing powerful linkages for unique insights
- Link your cross-asset information** to connect all of your non-streaming information for pricing and reference data needs
- Manage data with Intelligent Tagging** to explore, clean, tag & catalog your assets for better structure
- Manage risk with Org ID** by gaining insight into business events and securely mapping the information to your own data

For more information visit [permid.org](http://permid.org)

The intelligence, technology and human expertise you need to find trusted answers.



the answer company™  
**THOMSON REUTERS®**