

# Ensuring critical, timely and relevant information on the infrastructure project of the century.

The Belt and Road Initiative, and how Refinitiv can  
help financial professionals unlock its opportunities.

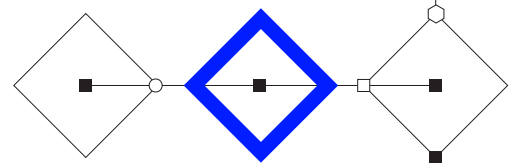
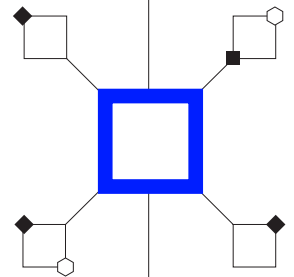
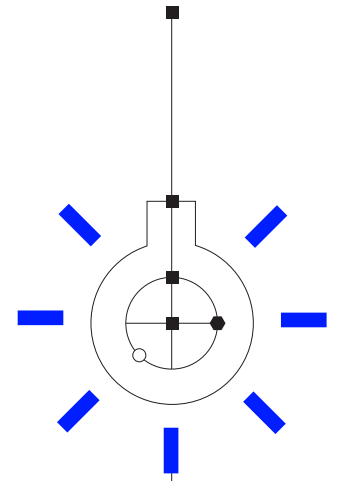
The Financial and  
Risk business of  
Thomson Reuters  
is now Refinitiv.

**REFINITIV**<sup>™</sup>  
DATA IS JUST  
THE BEGINNING 

# Why is the Belt and Road Initiative (BRI) important for financial professionals?

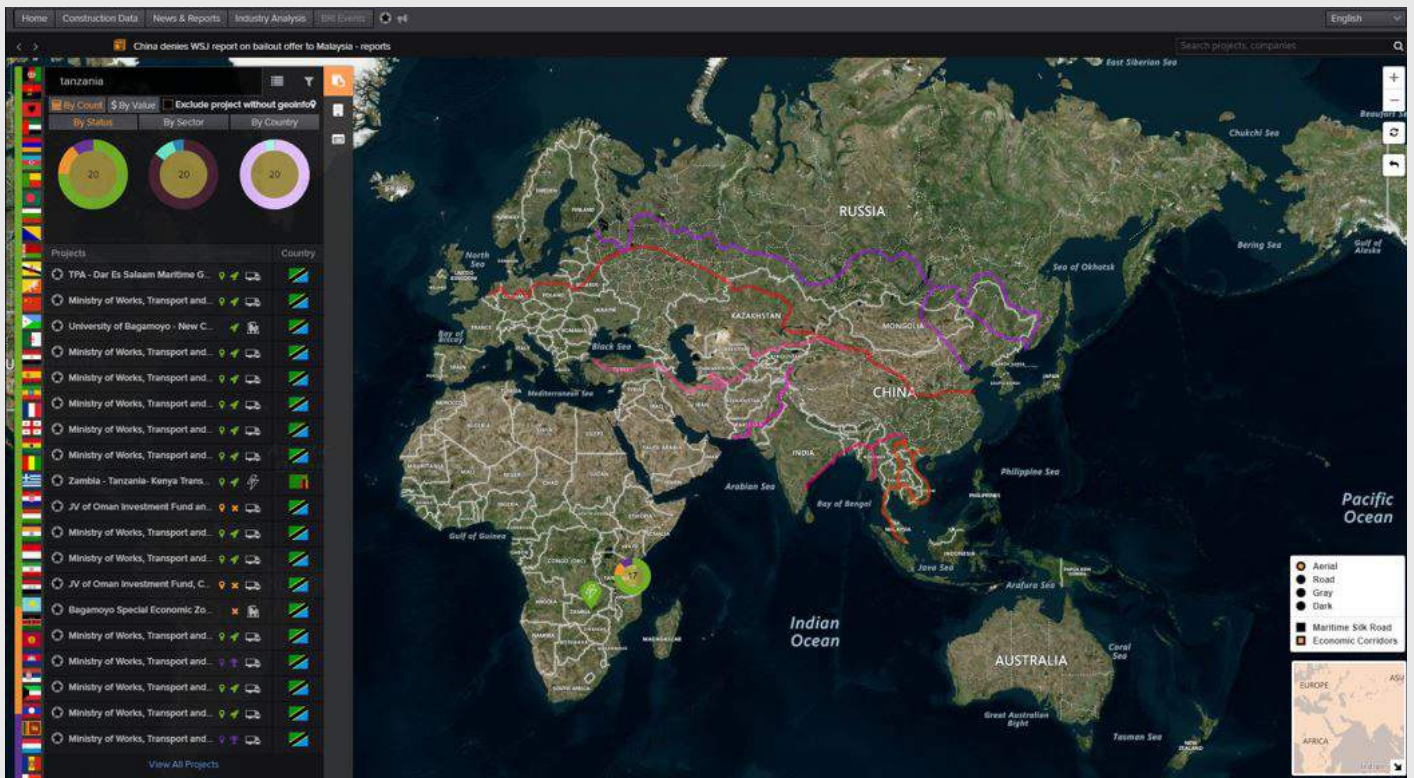
The Belt and Road Initiative is an unprecedented program building strategic infrastructure projects across Asia, Europe, and Africa. Officially launched by China's President Xi in 2013, it is already considered the largest investment program in human history, accounting for more than 500 BN USD of spend in infrastructure projects across over 70 countries.

BRI is vast, encompassing a wide range of infrastructure projects connecting countries that account for over 60 percent of the global population along six different economic corridors and one maritime route. The program aims to unlock business opportunities for the economies it covers, by supporting industrial development and broadening trade routes.



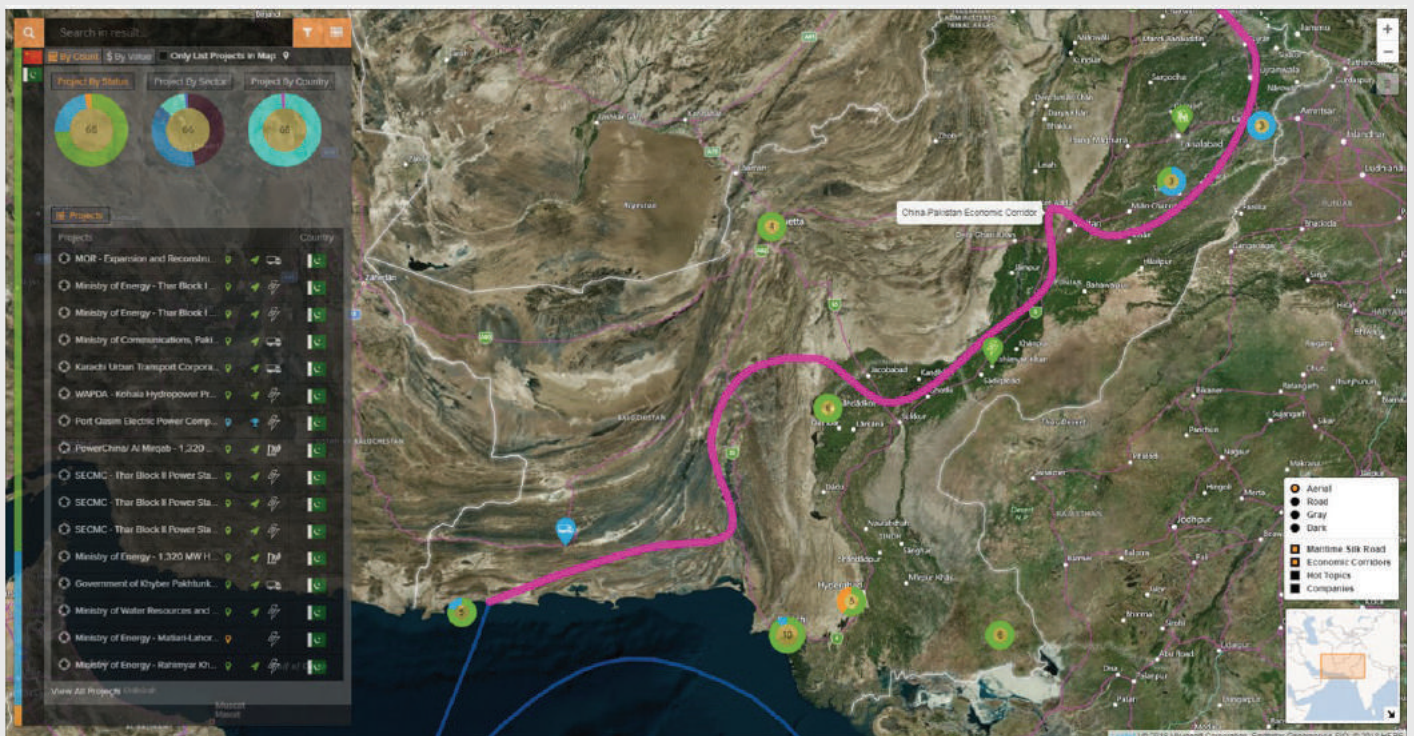
# Get comprehensive insight into BRI projects in our BRI Connect App on Eikon

Display and filter projects on the interactive map



Filter/Display List of Infrastructure Projects by Country (Tanzania =17) – Breakdown by Project Status (Active/Delayed/Completed) & Sector (Transportation/Power & Water) Zoom in to locate projects on a map and link to view project details.

## Explore projects along economic corridors



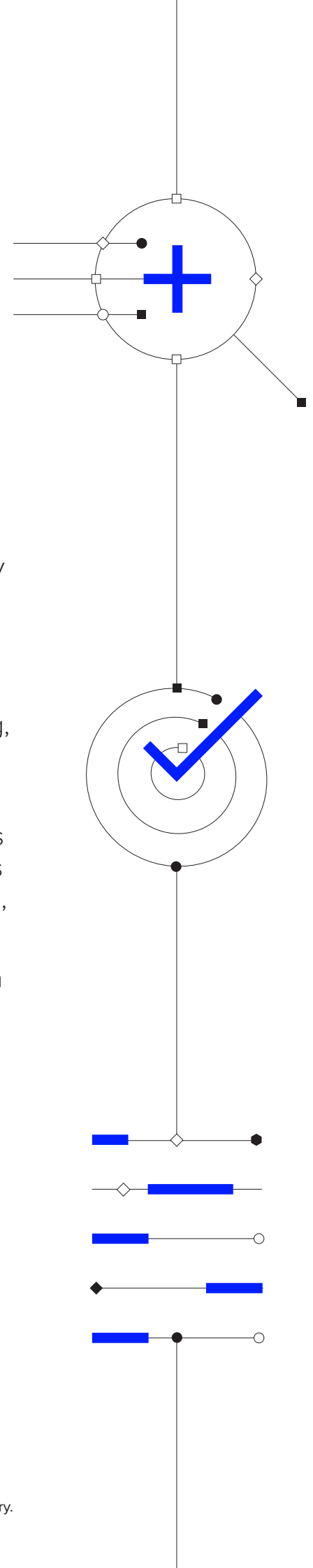
Filter by Economic Corridor to view all projects along a specific economic corridor.

# Opportunities... and risks.

The unprecedented creation of new ports, airports, roads, and railroads in key developing countries could dramatically reduce the cost of trade and increase the ease of doing business in these areas, transforming connections between Asia and the rest of the world and opening up investment areas in key economic sectors. These new land and maritime routes, and the global trade hubs they are creating, are already redesigning the value maps of entire regions and countries.

The BRI infrastructure projects will ultimately act as keystones for much wider ecosystems; presenting lateral opportunities for more consumer-focused sectors such as logistics, tourism, retail and real estate.

Providing investors with access to trusted, holistic information about the BRI initiative – including macroeconomic, project, market, financing, geopolitical and operational risk data – is absolutely critical.



## View projects by delivery schedule and bidders

The screenshot displays a project profile for 'AVIC Jonhon Henan - Optronic New Technology Industrial Base'. The page includes a navigation bar with 'Home', 'Construction Data', 'News & Reports', 'Industry Analysis', and 'BIB Events'. The project title is prominently displayed at the top, followed by a search bar. Below the title, there are tabs for 'Projects Details', 'Participants & Contacts', 'Schedule & Bidders', and 'Related Deals'. The main content area features a vertical timeline of milestones with the following details:

Date	Milestone Description
12/2019	<b>COMPLETION</b> Construction Of The Project Was Expected To Be Completed By The End Of 2019
11/2018	<b>CONSTRUCTION</b> Construction Of The Project Was Ongoing
12/2016	<b>CONSTRUCTION</b> Construction Of The Project Started
04/2016	<b>FEED</b> FEED & Geological Survey Consultant Contract Was Awarded To Sinomach TDI International Engineering Co Ltd
03/2016	<b>ANNOUNCEMENT</b> Project Was Approved By Board Meeting Of The Project Company

Additional information includes the project phase (Ongoing), announcement date (2016-03), start date (2016), completion date (2019-12), and location (Luoyang, Henan, China).

Projects/Schedules & Bidders – View project timelines from Announcement through to Completion, including key Milestones (previous, latest, expected). Other Project Profile tabs include Project Details, Participants and Contacts, Related Deals.

## Discover related deals and organizations

The screenshot displays a related deals page for 'CHINA AVIATION OPTICAL-ELEC PRICES US\$185M CONVERTIBLE'. The page includes a navigation bar with 'Home', 'Construction Data', 'News & Reports', 'Industry Analysis', and 'BIB Events'. The deal title is prominently displayed at the top, followed by a search bar. Below the title, there are tabs for 'Projects Details', 'Participants & Contacts', 'Schedule & Bidders', and 'Related Deals'. The main content area features a table of deal details and a section for issuer information.

Deal Type	Deal ID
Project Finance	3732011158
Bond	3166363102
Equity	3166363102

The deal details table includes the following information:

Offer Date	Proceeds Amount + Over allotment Sold All Markets (MM)	185,499	Rank Eligible (Y/N)	Y
Date of First Conversion	Proceeds Amount All Markets (MM)	185,499	Use of Proceeds	Capital Expenditures Working Capital Pay Fees & Expenses
Date Conversion Expires	Host Currency (CY)		Fees: Total Global Spread Gross (MM)	0.630
Spin Off	Exclude Spinoffs and Privatizations	Proceeds Amount + Over allotment Sold All Markets (Host MM)	1,283,747	

The issuer information section includes the following details:

Name	Issuer	Issuer Ultimate Parent
China Aviation Optical Elec	China Aviation Optical Elec	China Aviation Optical Elec
Nationality	China	China
Public Status	Public	Public
Ticker	002179	002179
Primary Listing	ShenzSME	ShenzSME
TRIC Economic Sector	Industrials	Industrials
TRIC Business Sector	Industrial Goods	Industrial Goods
TP Macro Industry	High Technology	High Technology
TP Mid Industry	Electronics	Electronics
Primary SIC Code	3678	3678
Primary SIC Description	Electronic connectors	Electronic connectors
Business Description	China Aviation Optical Electrical Technology Co Ltd, located in Luoyang, China, manufactures and wholesales optical electrical products. The company was founded in 2002.	China Aviation Optical Electrical Technology Co Ltd, located in Luoyang, China, manufactures and wholesales optical electrical products. The company was founded in 2002.

The tranche details section includes the following information:

SOC Deal No	Tranche 1	Tranche 2	Tranche 3
3307615102	3307615102	3307614102	3166363102
Offer Date	11/01/2018	11/01/2018	11/01/2018
Deal Status	LIVE	LIVE	LIVE
Issue Type	Convertible	Convertible	Convertible
Security Type	Convertible Bds	Convertible Bds	Convertible Bds
Offering Technique	Firm Commitment	Best	Best
Proposed Amount This Month (MM)	96,744	10,173	78,611

All values provided in USD, except for the host currency values. Host currency is CY.

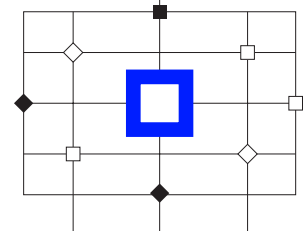
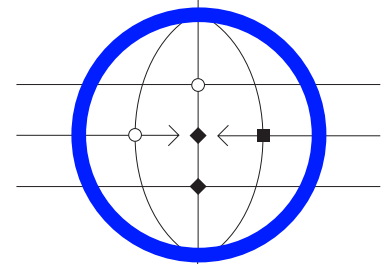
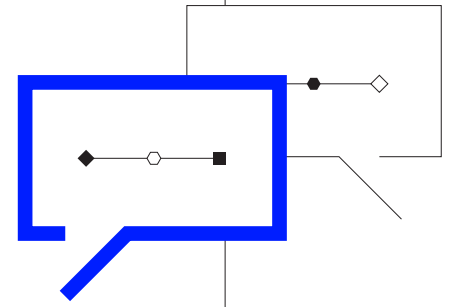
Project profiles include links to related deals, access to teasheets related to the projects financing.

# Why Refinitiv is your only partner to deliver critically important, trusted information.

The BRI Connect solution puts Refinitiv at the forefront of helping investors stay informed and to make investment decisions using our wealth of trusted information and analytics, including comprehensive information on over \$2 trillion worth of BRI projects, macroeconomic and historical time series data, ESG benchmarking, project finance, deals, due diligence and risk profiling analytics.

BRI Connect will help investors monitor specific projects; get access to unparalleled coverage of project financing deals and primary capital markets; have a better understanding of where to invest in BRI; secure accurate, up-to-date country risk ratings; and the ability to mitigate counterparty exposure when operating with cross-border transactions in BRI countries.

We cover over 3500 BRI related organizations including shareholders, number of employees, company hierarchy and directors, tenders and bidders, participants and scope of work, and more than 4000 related officers with job titles and contact information.



## Portfolio and Projects

**Kenya Electricity Generating Company Limited**  
 Update on 2014-12-22  
 Also known as: KenGen Commercial Registration Number: Kenya

**OVERVIEW**

Country: Kenya  
 Ownership: Publicly Listed  
 Company Type: Limited Liability  
 Principal Activities: Provides fossil fuel, wind, geothermal and hydroelectric power generation services.  
 No. of employees: 2209  
 Date of Establishment: 1954-01-01  
 Sector / Industry: Power and Utilities

**CONTACT**

Address: Slima Plaza, Phase 1, 47936, Kenya  
 Floor: N/A  
 City: Nairobi  
 Tel: +254 71 103 6000, +254 73 211 6000, +254 20 366 6000  
 Fax: +254 20 224 8948  
 Email: [pr@kenken.co.ke](mailto:pr@kenken.co.ke)  
 Website: [www.kenken.co.ke](http://www.kenken.co.ke)  
 Related Links: N/A  
 Region: Nairobi

**MAJOR SHAREHOLDERS**

Name	Type	Holding	Country
Government of Kenya	Government	70%	Kenya
Public		30%	Kenya

**DIRECT INVESTMENTS AND RELATED ENTITIES**

**SISTER COMPANIES**

Name	Holding	Country
The Kenya Power & Lighting Company Ltd.	N/A	Kenya

**Summary:**  
 Total Number of Projects: 5  
 Projects Completed: 0  
 Total Value of Projects: US\$180.0M

**PROJECTS**

Country	No. of Projects	Value, US\$
Kenya	5 (100%)	180.0M
<b>Total</b>	<b>5</b>	<b>180.0M</b>

**TENDERS**

No data to present

**PROJECTS LIST**

Type	Name	Country	Region	Sector	Value, US\$	Status
🔄	Kenya Electricity Generating Company Limited - KenGen Guarantee Project - Power Plant Construction	Kenya	Sub-Saharan Africa	Power & Water	180.0M	Active
🔄	Kenya Electricity Generating Company Limited - KenGen Guarantee Project - Resource Assessment	Kenya	Sub-Saharan Africa	Power & Water	180.0M	Active

Public, Private company profiles with tabs for Profile/Management/Portfolio & Projects Portfolio & Projects tabs allows you to view all related projects that a company is involved with.

## ABOUT REFINITIV

Refinitiv is one of the world's largest providers of financial markets data and infrastructure. Serving more than 40,000 institutions in over 190 countries, we provide information, insights and technology that drive innovation and performance in global markets.

Our 160-year Reuters heritage of integrity enables customers to make critical decisions with confidence, while our unique open platform, best-in-class data and cutting edge technology bring greater opportunity to our customers.

By advancing our customers, we drive progress for the entire financial community.

Visit [refinitiv.com](https://refinitiv.com)