

Renewables Dashboard App

On Refinitiv Eikon & Workspace

Refinitiv's interactive **RENEWABLES** dashboard app provides users with access to a global database of power-producing facilities in the renewable sector. The coverage refers to data on wind, solar, hydroelectric, geothermal, and bio sources as well as battery storage. Information is available for pricing (country-level PPAs, GOs, RECs, carbon allowance prices, etc.), research reports, and relevant renewable industry news for these energy sources.

Why use the Renewables Dashboard App?

The Renewables app is your go-to source for:

- Energy mix based on aggregated installed capacity.
- Breakdown of facilities by energy type and energy source.
- Historic capacity growth for a given country or a company over a specific period.
- Key facilities and the cities in which they are concentrated.
- Facilities locations using satellite images
- News about specific facilities, including information about outages

The Renewables app also allows users to forecast and analyse future trends based on facilities under construction and what capacity they will bring to the grid.

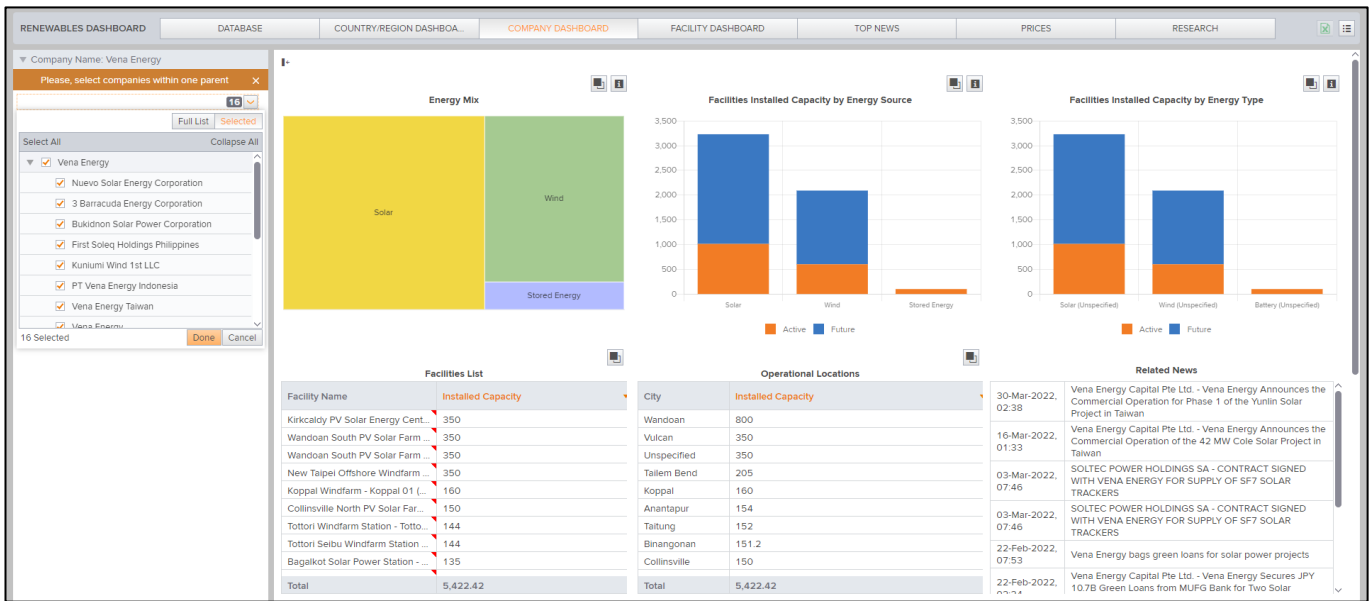
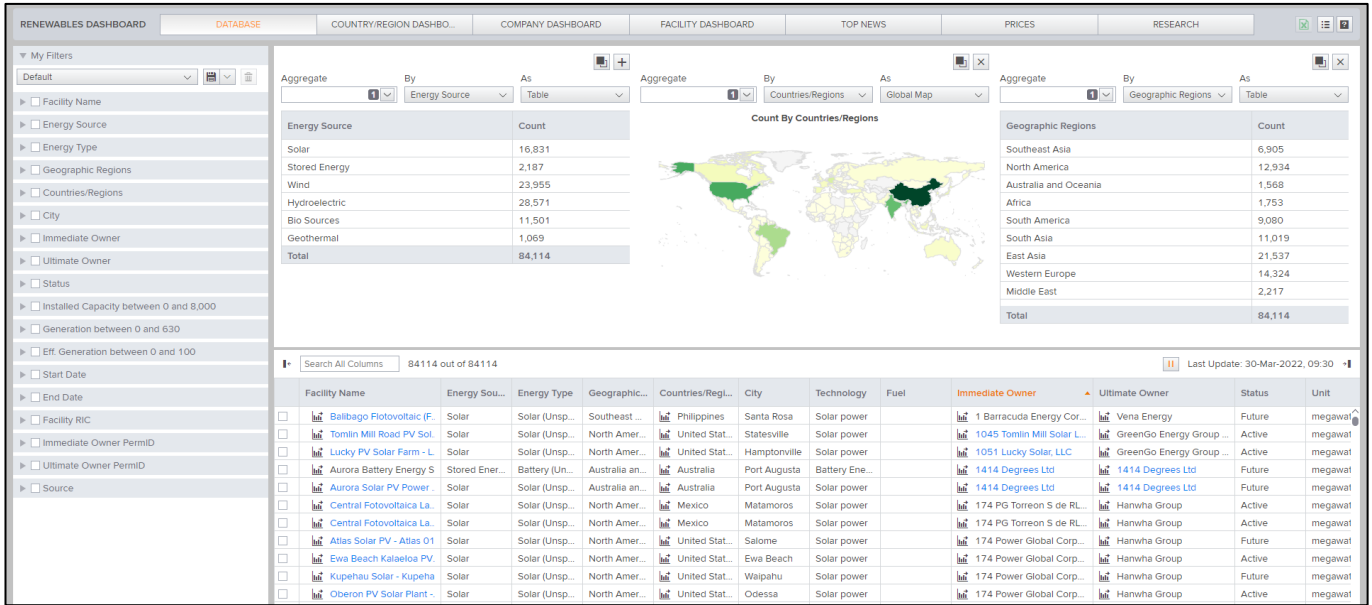
Key capabilities

The Renewables app provides specific information about facilities, including:

- Location
- Owners and/or operators
- Technology and/or fuel used
- Capacity and utilisation

Users can:

- Narrow down specific searches using pre-defined filters (e.g., facility name, energy source, energy type, geographic regions, countries, cities, status, ownership, capacity and generation ranges).
 - Explore interactive dashboard visuals for a country, company, or facility.
 - View facility data in relation to company ownership info using click-through functionality.
 - Explore company portfolios of a parent company, through its subsidiaries down to the operated facilities.
-



Visit refinitiv.com

Refinitiv, an LSEG (London Stock Exchange Group) business, is one of the world's largest providers of financial markets data and infrastructure. With \$6.25 billion in revenue, over 40,000 customers and 400,000 end users across 190 countries, Refinitiv is powering participants across the global financial marketplace. We provide information, insights, and technology that enable customers to execute critical investing, trading and risk decisions with confidence. By combining a unique open platform with best-in-class data and expertise, we connect people to choice and opportunity – driving performance, innovation and growth for our customers and partners.

An LSEG Business

