

We are now Refinitiv, formerly the Financial and Risk business of Thomson Reuters. We've set a bold course for the future – both ours and yours – and are introducing our new brand to the world.

As our brand migration will be gradual, you will see traces of our past through documentation, videos, and digital platforms.

Thank you for joining us on our brand journey.



**REFINITIV**<sup>TM</sup> 

The Refinitiv logo, featuring the word 'REFINITIV' in a bold, black, sans-serif font, followed by a trademark symbol (TM). To the right of the text is a blue graphic symbol consisting of two perpendicular lines of equal length, forming an L-shape.

# Thomson Reuters Eikon Private Equity

Private Equity content is available in Thomson Reuters Eikon and includes over 30 years of daily-updated history covering private equity and venture capital firms, funds, and portfolio companies around the world.

The **Private Equity data** and capabilities are powered by VentureXpert, the premier source for comprehensive information on this market. It also provides analytics on disbursements, as well as companies, firms and funds in the market.

**BAIN CAPITAL INC** ▾

Overview | Research | Fundamentals | Officers | Filings | Events | **Events (NEW)** | Transactions | Ownership | 360 Menu

PREVIEW See what's changing Send us feedback

### PRIVATE EQUITY FIRM SUMMARY

Currency: USD - US Dollar

* FIRM INFORMATION		* TOP CO-INVESTORS		
200 Clarendon Street John Hancock Tower Boston, Massachusetts 02116 United States Phone: 6175162000 Website: <a href="http://www.baincapital.com">www.baincapital.com</a>	Firm Status: <b>Actively seeking new investments</b> Firm Type: <b>Private Equity Firm</b> Founded: <b>1984</b> Other Offices: <a href="#">More</a> Cap Under Mgmt: <b>27,000.00 M USD (As Of 05-Dec-2006)</b>	Firm Name	# of Companies	# of Rounds
Affiliations		Thomas H Lee Partners LP	16	18
Australasian Venture Capital Association (AVCAL)		Kohlberg Kravis Roberts & Co LP	9	17
British Venture Capital Association (BVCA)		Blackstone Group LP	10	15
China Venture Capital Association		Pfizer Corp	14	15
European Private Equity and Venture Capital Assoc.		Goldman Sachs & Co	9	13
German Venture Capital Association (GVK)		+ INVESTMENT PROFILE		
Indian Venture Capital Association (IVCA)		Industry	Nation	Stage
		Status	Year	State/Region
		All Investments		
		+ FUNDS MANAGED BY FIRM		
		Name	Size (M USD)	Fund Stage

**\* LATEST DIRECT INVESTMENTS** View All

- ScaleArc, Inc.**  
Technology | 19-Jan-2016 | United States | Active
- PJ Trailers**  
Industrials | 04-Jan-2016 | United States | Active
- Big Tex Trailer Manufacturing Inc.**  
Consumer Cyclical | 21-Dec-2015 | United States | LBO
- Autodistribution SA**  
Consumer Cyclical | 09-Dec-2015 | France | LBO
- Edcon Holdings Ltd**  
Consumer Cyclical | 30-Nov-2015 | South Africa | Active
- Emcure Pharmaceuticals Ltd**  
Healthcare | 15-Nov-2015 | India | Active
- Blue Coat Systems Inc.**  
Technology | 09-Nov-2015 | United States | Active

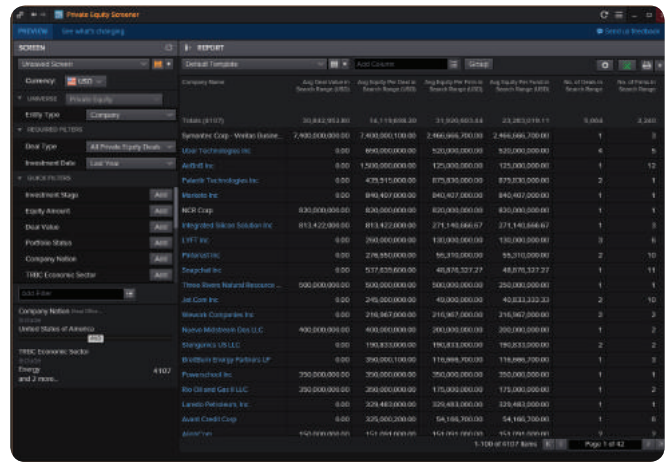
PE Firm Profile

## Content Highlights

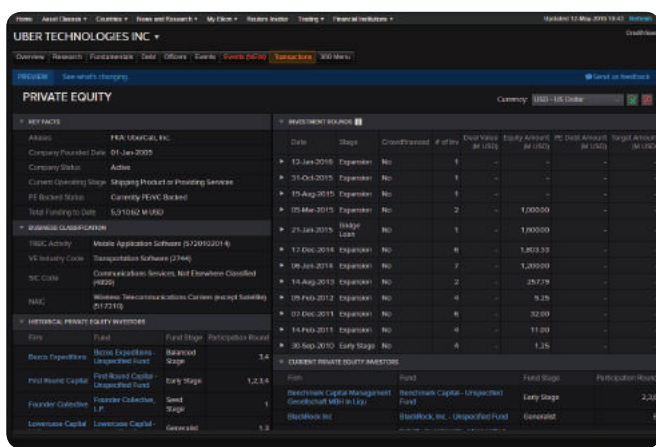
- Detailed profiles for 22,000+ Private Equity/Venture Capital firms and 51,000+ funds, including 21,000 funds with Fundraising History dating back to the 1970s
  - Coverage statistics include fund investment focus, fund size, funds under management, portfolio company details, and portfolio allocations
- Investment Activity information for over 292,000 investments, including round date, amount and participating investors
  - Coverage statistics include Americas: 194,000+, EMEA: 63,000+, Asia/Pacific: 33,000+
- Comprehensive profiles for 133,000+ currently and formerly Private Equity/Venture Capital backed companies, including company descriptions, key facts & officers/directors, current and historical investors, and investment round details
  - Coverage statistics include over 30,000 companies currently backed by Private Equity/Venture Capital investors

## Benefits of Private Equity in Eikon

- Identify potential sponsors for sell-side M&A transactions or follow-on rounds
- Determine the best partners, co-investors or buyers for an exit strategy
- Uncover candidates that may be ripe for a merger, acquisition or divestiture
  - Search and report on PE/VC backed and non PE backed private companies
  - Search private equity and venture capital-backed companies by industry, location, round size, round date, business description and keywords, among other criteria
- Create customized transaction and statistical investment reports and customized company reports



PE Screener



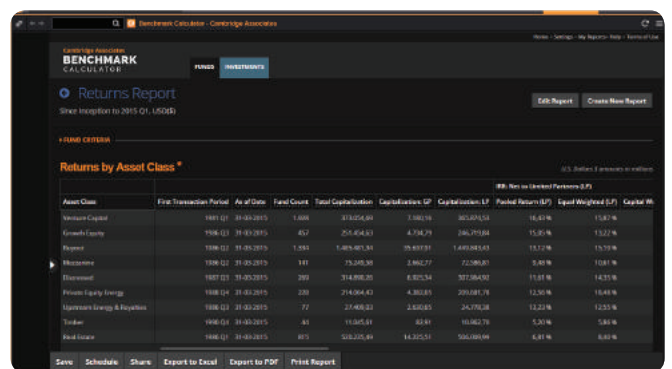
PE Company Profile

## Thomson Reuters Private Equity offering complements its industry-leading Deals and League Table coverage

- Mergers & Acquisitions: Over 1,100,000 global M&A transactions from the 1970s to present, including 350,000+ US-target and 750,000+ non-US-target transactions
- Debt Capital Markets: Over 900,000 bond deals since the 1960s, including investment-grade, high-yield, and emerging market corporate bonds and ABS/MBS/Agency issues
- Equity Capital Markets: Over 300,000 equity capital markets new issues including IPOs, follow-ons, block trades, and convertible bonds since the 1970s
- Syndicated Loans: Over 300,000 global corporate loan transactions since the 1980s
- Hundreds of standard league tables across asset classes, recognized as the authoritative source in the market

## Cambridge Associates Benchmark Calculator (chargeable add-on)

- Benchmarks are based on one of the industry's largest institutional quality datasets, with all data directly sourced from contributing fund managers' financial statements and subjected to additional layers of rigorous quality control
- Detail-driven report types give access to enhanced analysis including quarterly aggregate benchmark cash flow and net asset value (NAV) data for over 6,700 funds, percentile analysis reports, returns distribution reports, and aggregate portfolio company benchmarks leveraging performance data for over 75,000 underlying portfolio investment positions.
- Access preliminary performance data several weeks before final benchmarks are published for the quarter
- Compare private equity performance to public indices easily and efficiently using the Cambridge Associates Public Market Equivalent (mPME), Direct Alpha and K&S. PME



PE Cambridge Associates Returns Report

## How to access

The Cambridge Associates Benchmark Calculator is available as a chargeable add-on service to your Thomson Reuters Eikon subscription. To gain access, please contact your Thomson Reuters account manager.