



We are now Refinitiv, formerly the Financial and Risk business of Thomson Reuters. We've set a bold course for the future – both ours and yours – and are introducing our new brand to the world.

As our brand migration will be gradual, you will see traces of our past through documentation, videos, and digital platforms.

Thank you for joining us on our brand journey.



**REFINITIV**<sup>TM</sup>

The Refinitiv logo, which is a blue stylized 'R' shape formed by two L-shaped elements: one on the left and one on the bottom, both pointing towards the top-right.

# THOMSON REUTERS KNOWLEDGE DIRECT API

DIGITAL SOLUTIONS

## Transform the web-based information services you deliver.

Thomson Reuters Knowledge Direct API meets the demands of clients who have a requirement to incorporate financial market data within applications for display purposes, whether for internal or redistribution.

The Thomson Reuters Knowledge Direct API integrates into your website, trading platform, company intranet/extranet, advisory portal and mobile applications to provide up-to-date financial market data, news and analytics which includes global real-time exchange and OTC data, market leading news, company fundamentals and consensus estimates reports, corporate calendars and Lipper Funds. Powerful, investment tools and capabilities enables software developers to display data in dynamic and intuitive ways.

### THE DATA TO POWER YOUR ENTERPRISE

#### News & Insight

- **Real-Time News** – Provided in 15+ languages including English and all major European and Asian dialects.
- **Online Reports** – Delivers news to online publishers with around-the-clock stories and images across a wide range of news categories, spanning economics, markets, companies and equities.
- **Significant Developments** – Concise descriptions of crucial, market-moving events provided in near real time.
- **Newsletters** – Get broad economic, regional market and asset-class-specific updates and insights delivered to your inbox daily.
- **Thomson Reuters Top News** – Presents the biggest business and political stories that are moving markets and making headlines around the world in an easy, front page-style format. Includes analysis.

#### Economic Data

- **Economic Indicators** – A comprehensive collection of global economic content, with a clear emphasis on factors that affect global financial market performance.

#### Market Data & Pricing

- **Equity Pricing** – From over 160+ exchanges worldwide in delayed, real-time snapshot or streaming format.
- **Futures Pricing** – Access comprehensive coverage of all exchange traded Futures content.
- **Foreign Exchange Data** – Access 150+ global rates and 1000+ cross rate instruments, including both major and emerging market currencies using Thomson Reuters Foreign Exchange real-time pricing and news.
- **Thomson Reuters Indices** – Bespoke set of indices developed by Thomson Reuters which allow clients to more easily monitor and digest market activity.

	2014	2013	2012	2011	2010
Earnings Quality Score	97	93	91	95	70
Revenue	88,833	77,849	73,723	69,943	62,484
Other Revenue, Total	—	—	—	—	—
Total Revenue	88,833	77,849	73,723	69,943	62,484
Cost of Revenue, Total	29,924	29,249	17,530	15,917	12,393
Gross Profit	58,889	57,600	56,193	54,306	50,089
Selling/General/Admin. Expenses, Total	29,932	29,425	18,428	16,152	17,218
Research & Development	11,381	10,411	9,811	9,043	8,714
Depreciation/Amortization	—	—	—	—	—
Interest Expense, Net - Operating	—	—	—	—	—
Interest/Investment Income - Operating	—	—	—	—	—
Interest Expense(Income) - Net Operating	—	—	—	—	—
Interest Exp (Inc.)/Net-Operating, Total	—	—	—	—	—
Unusual Expense (Income)	253	208	6,193	0	58
Other Operating Expenses, Total	—	—	—	—	—

Offers details on Company Fundamentals including Income Statement, Cash Flow, Balance Sheet and Ratios.

- **Fixed Income** – Get the world's most extensive fixed income market and economic news, with unrivaled pricing data.
- **Commodities** – Get award-winning commodity trading insight – Reuters news, extensive exchange and specialist price data, exclusive fundamentals, and specialist research and forecasts.
- **Quotes** – Enables you to retrieve a snap quote or a quote chain and delayed stock prices.
- **Lipper Funds Database** – Search, evaluate and select the most appropriate funds through Lipper's comprehensive datasets.
- **Time series** – Consists of two operations that focus on providing you with historical prices on instruments.

#### Company Data

- **Thomson Reuters I/B/E/S Estimates** – The industry standard for analyst detail, consensus and aggregate data, offering more history, contributing brokers and company coverage than any other provider.
- **Street Events** – Corporate earnings announcements, conference calls and company information is organized into an online master calendar.
- **Filings** – Access the largest, most consistent and authoritative source for global public company corporate disclosure.
- **Fundamental Data** – Deep analytical view from our fundamental database covering 42,000 companies and representing 90% of the world's capitalization.
- **Briefs & Transcripts** – A searchable archive of significant company developments from news wires, journals and conference call scripts.

- **Investment Profile Reports** – Enable faster and smarter investment decisions by providing access to research on over 25,000 companies globally.
- **Broker Research** – Direct access to research from 800 brokerage firms, independent research boutiques and other sources, covering more than 21,000 companies across 87 countries.
- **StockReports+** – Provides you with unbiased stock rating analysis that offers a new outlook and strategy for trading.

**Contributed Data**

- Connecting over 10,000 capital markets & advisory desks, OTC sales & trading desks, sell-side research firms and buy-side fund management institutions worldwide.

**WORKFLOW TOOLS & CAPABILITIES**

Our API offers developers trading tools and capabilities that display and manage our cross-asset financial market data in powerful ways.

**Search** – A search engine that searches Reuters financial reference information by major international and local coding schemes for financial instruments.

**Charts** – Used to retrieve a wide range of technical charts and tabular displays generated live. From 10 days’ intraday history to 20 years’ interday history with more than 25 indicators available and the ability to chart multiple instruments.

**Quotelist** – This service lets you retrieve prices on multi-instrument and multi-field quote lists in a single request. Quotelists can be saved on Thomson Reuters server and allocated to a specific user.

**Portfolio tracker** – Create, maintain, view and analyze portfolios and their multi-currency instruments, using latest prices and FX rates.

**Profiles** – The service allows users to store their broker research search criteria in the Reuters database.

**JSON** – Our API supports JSON as a data interchange format in addition to the existing SOAP/XML format.

**INTEGRATION & DELIVERY**

Thomson Reuters Knowledge Direct API offers non-streaming, inquiry-based access to our financial market data, news and analytics using JSON, SOAP and XML protocols. Access to Thomson Reuters datacenters can be over the internet or dedicated IP connectivity. Data compression is available to maximise bandwidth efficiency. Latest industry-standard formats enable you to retrieve and customize data via the web for your own firm and for client-delivered services.

**DIGITAL SOLUTIONS**

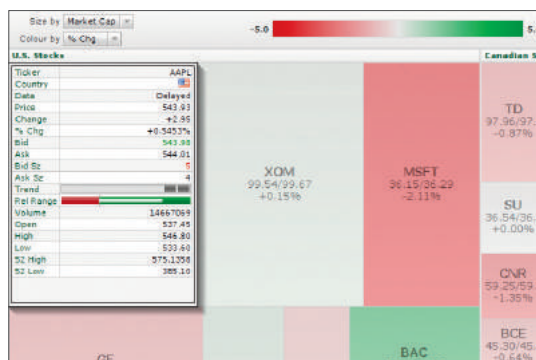
The Thomson Reuters Knowledge Direct API supports our Digital Solutions offering, which brings together our robust API infrastructure with additional market leading investment tools and capabilities, to deliver leading financial market data, news and analytics to wealth management companies, corporations and fintech developers globally.



Access to over 200,000 time series instruments. Over 15 different charting analyses and over 45 customizable parameters so charts can be given a unique look and feel.



An example of the Chart Analysis available through our partner network.



An example of the heatmaps available through our partner network.