



We are now Refinitiv, formerly the Financial and Risk business of Thomson Reuters. We've set a bold course for the future – both ours and yours – and are introducing our new brand to the world.

As our brand migration will be gradual, you will see traces of our past through documentation, videos, and digital platforms.

Thank you for joining us on our brand journey.



REFINITIVTM 

The Refinitiv logo, featuring the word 'REFINITIV' in a bold, black, sans-serif font, followed by a trademark symbol (TM) and a blue graphic symbol. The symbol is a stylized 'R' formed by two perpendicular lines of equal length, with the top-right corner cut off at a 45-degree angle.

SDC Platinum[®] Setup Guide



THOMSON REUTERS

SDC Platinum[®] Installation Guide

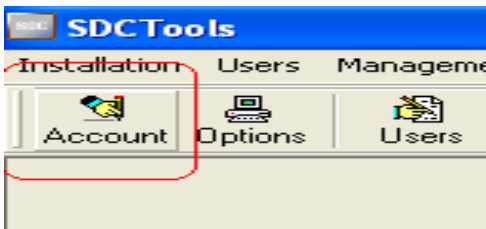
Follow the steps below to install SDC Platinum and set up users.

Step 1

Run the installation file. The installation program will ask you where you would like to install SDC. You can choose the default location or pick another.

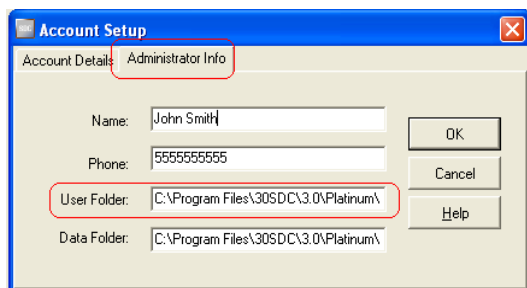
Step 2 – Setting up the account

Once SDC finishes installing, launch SDC Tools from your Start menu and click on Account.



Enter your Thomson Reuters provided user name and password in the place provided. Do not worry about the Host field.

Click on the Administrator Info tab and enter those details as well. At this time you can change the default SDC user folder. All users who use this installation of SDC Platinum will have the same user folder, but they will have a separate sub-folder under the user folder.

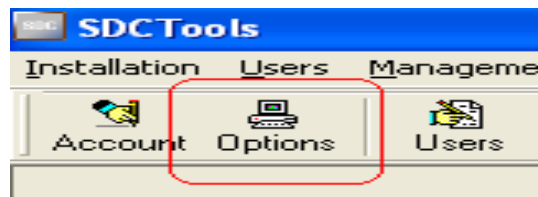


Unless you are an advanced user, do not change the Data folder location.

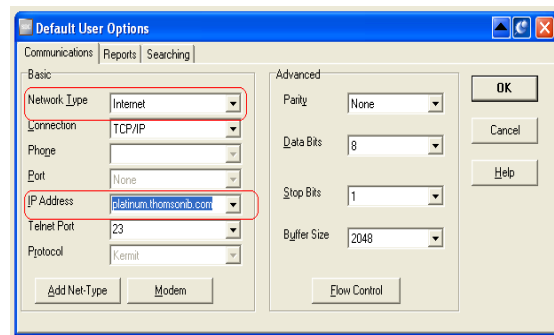
Click OK.

Step 3 – Setting up communications

Click on Options.



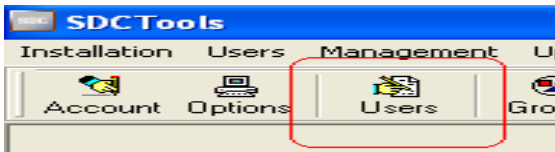
Your Thomson Reuters representative can tell you which network type you are using and which IP Address to use. When you have that information, choose the appropriate Network Type and IP Address.



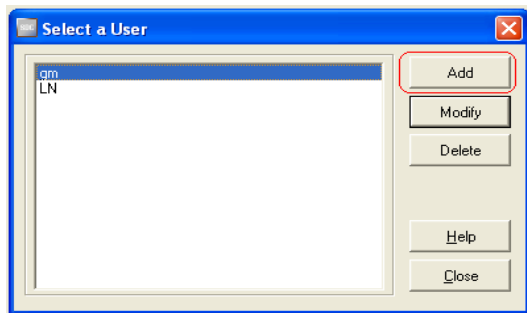
Click OK.

Step 4 – Setting up users

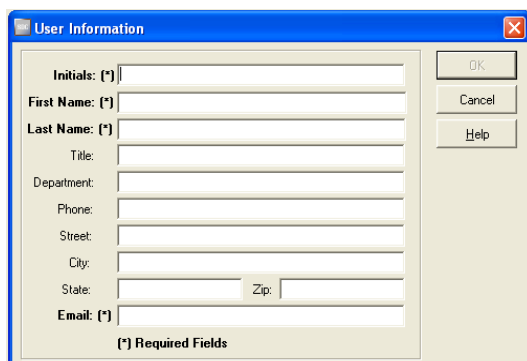
Click on Users.



For every user you want to add, click on Add and then fill in the required details and click OK. Repeat for each user. Initials can be at most 8 characters long.



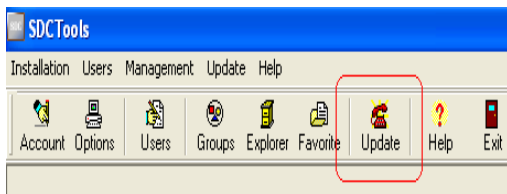
Once all users have been added, click on Close.



Step 5 – Doing an online update

There are two ways to do an online update.

- Click on the Update button in the SDC Tools



toolbar and wait for the process to complete (this could take half an hour or more depending on your network).

- Or, go to http://www.thomsonreuters.com/products_services/financial/sdc#updates

ONLINE UPDATES

Users of Version 2.1 and 2.2 should update to Version 3.0 or Version 2.3b as soon as possible. Doing so ensures that you have access to the latest information and enhancements available in SDC Platinum.

1. REQUIREMENTS

You must have SDC Platinum v2.2 SP4 or higher installed on your PC or network.

NOTE: To open the update file, you will need a decompression utility such as PK Unzip or Win Zip. Contact your technical administrator for assistance.

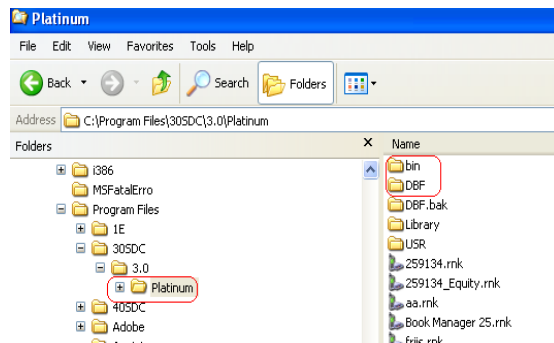
2. DOWNLOAD (LAST UPDATED: 20TH NOVEMBER 2008)

- [Download the update for v3.0.](#)
- [Download the update for earlier versions.](#)

3. INSTALLATION INSTRUCTIONS

- If an anti-virus package is installed on the PC, there will be a paintbox while the

- o Scroll down to find the Online Update section and click on the “Download the update for v3.0” link.
- o From the resulting dialog box, save the zip file onto your hard-drive and note the location.



- o Un-zip the file into the “Platinum” folder of your SDC Platinum installation. This folder will contain at least two sub-folders named bin and DBF.

Downloading the file and un-zipping is probably the faster of the two methods, but more prone to error.

Close SDC Tools.

Step 6 – Launching SDC Platinum

Launch SDC Platinum from your Start menu. Click on Options.

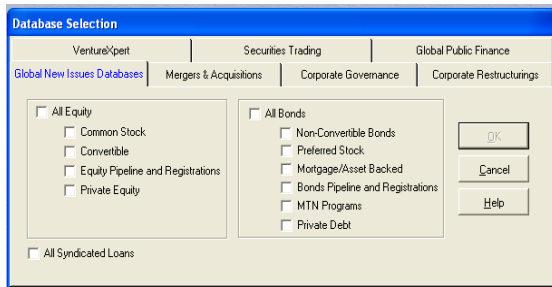


The Network Type and IP Address should be the same as what you entered in step 3 above. If they are not, change these entries now and Click OK.

Click on Login. When prompted, enter the initials of a user you set up in step 4 above. Click OK.

SDC Platinum will attempt to log you into our servers. On success, you will see the SDC Platinum bulletin board. Click OK to proceed.

You will then see the database selection screen (there might be slight differences between what you see and the picture due to differences in accounts and preferences).



Please contact us with any questions or concerns.

United States

888-463-3383

ThomsonONEBankerSupportUS@thomson.com

United Kingdom

+44 (0)870-191-0596

ib.support.europe@thomson.com

Australia

1 800 002 996 (toll free)

+612-9225-3145

ib.support.asia@thomson.com

Canada

800-662-7878 (toll free)

1-646-822-3636

ThomsonONEBankerSupportUS@thomson.com

France

00 33 1 53 32 39 37

TF.HelpdeskFR@thomson.com

Germany

+49(0)69-7140-5533

TF.HelpdeskDE@thomson.com

Hong Kong

+852-3762-3588

ib.support.asia@thomson.com

Japan

+813-5218-6580

9:00-18:00 M-F

tf.bbsupport.jp@thomson.com

Latin America

800-662-7878 (toll free)

1-646-822-3636

ThomsonONEBankerSupportUS@thomson.com

Philippines

+632-8785-777

ib.support.asia@thomson.com

Singapore

+65-6735-1395

ib.support.asia@thomson.comHeadquarter

www.thomsonreuters.com

www.thomsonreuters.com/platinum

© Thomson Reuters 2009. All rights reserved.

Republication or redistribution of Thomson Reuters content, including by framing or similar means, is prohibited without the prior written consent of Thomson Reuters.

'Thomson Reuters' and the Thomson Reuters logo are registered trademarks and trademarks of Thomson Reuters and its affiliated companies.



THOMSON REUTERS